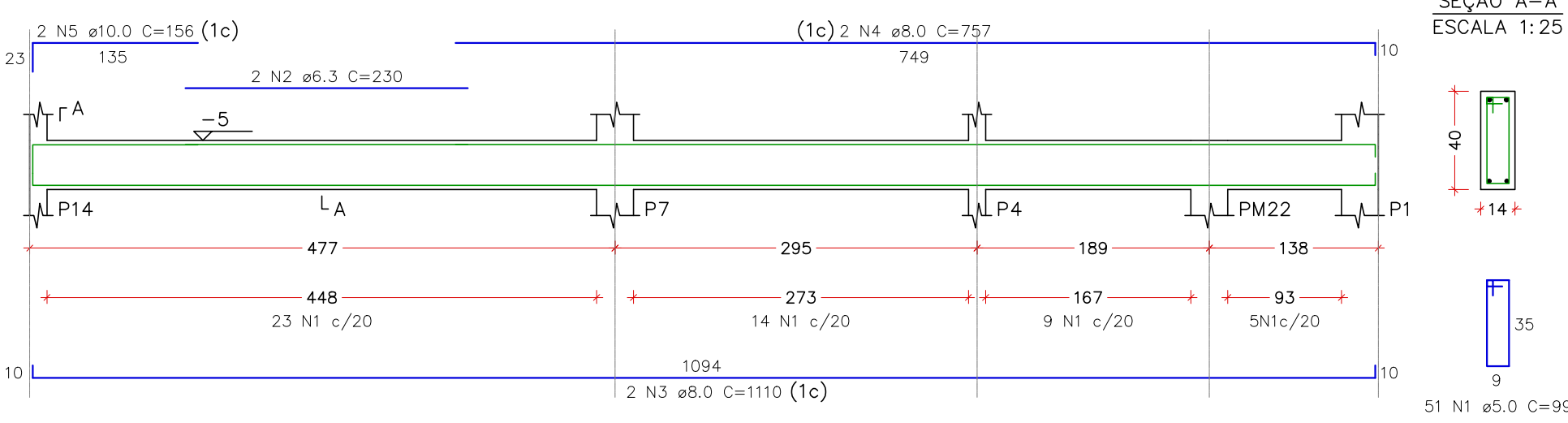
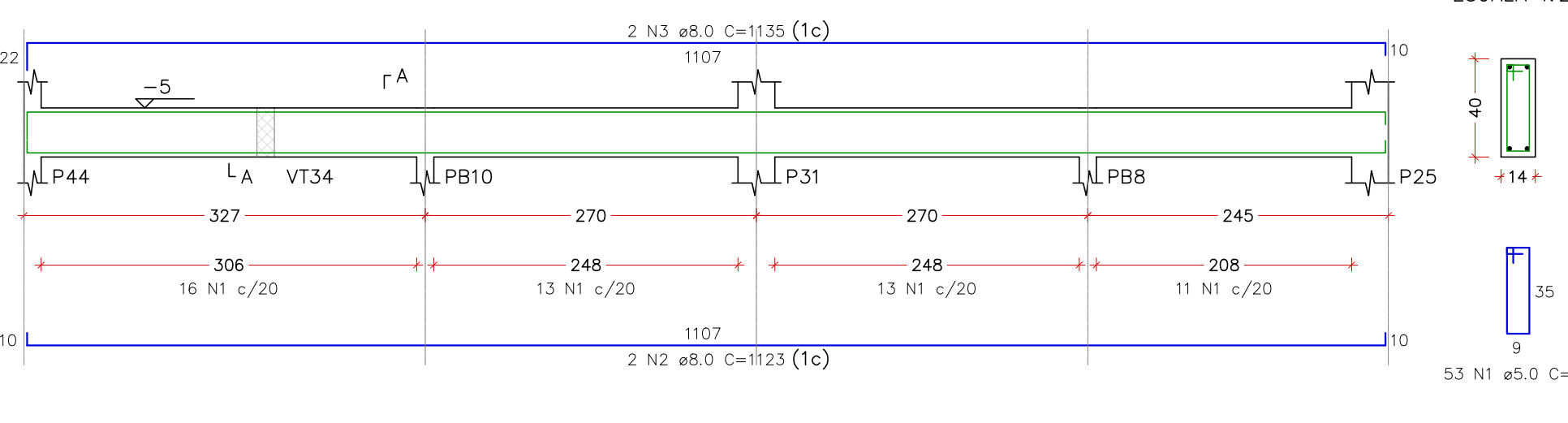


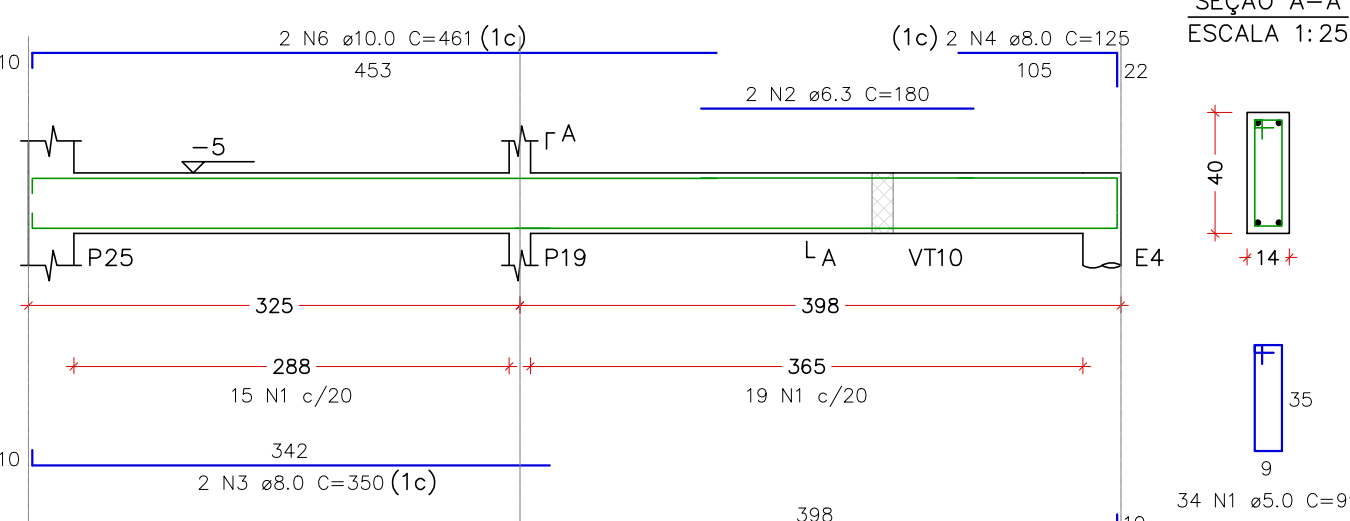
VT48
ESCALA 1:50



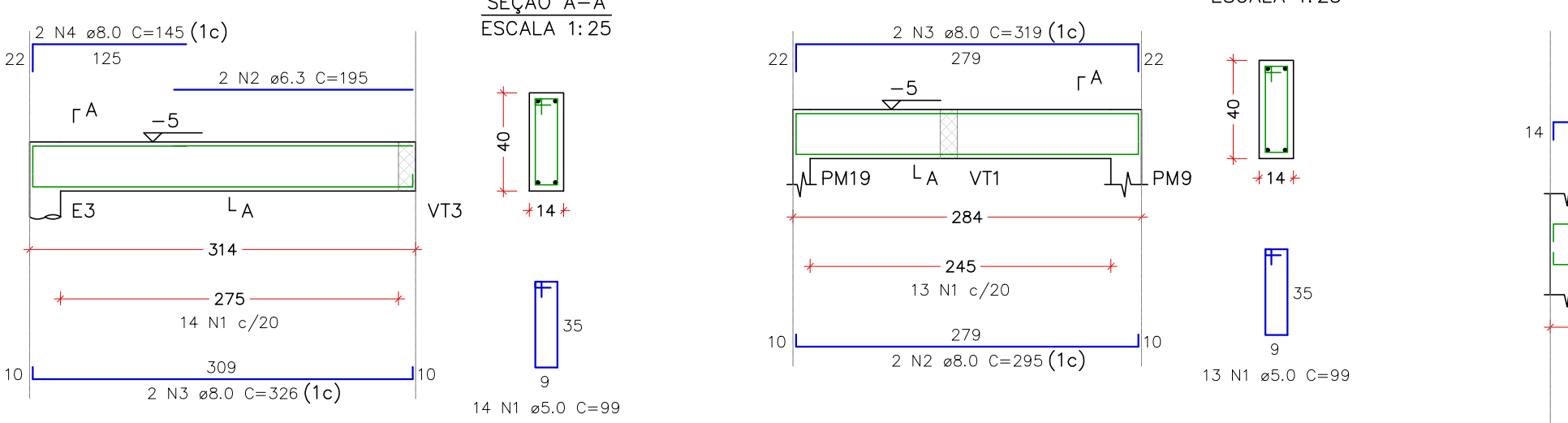
VT49
ESCALA 1:50



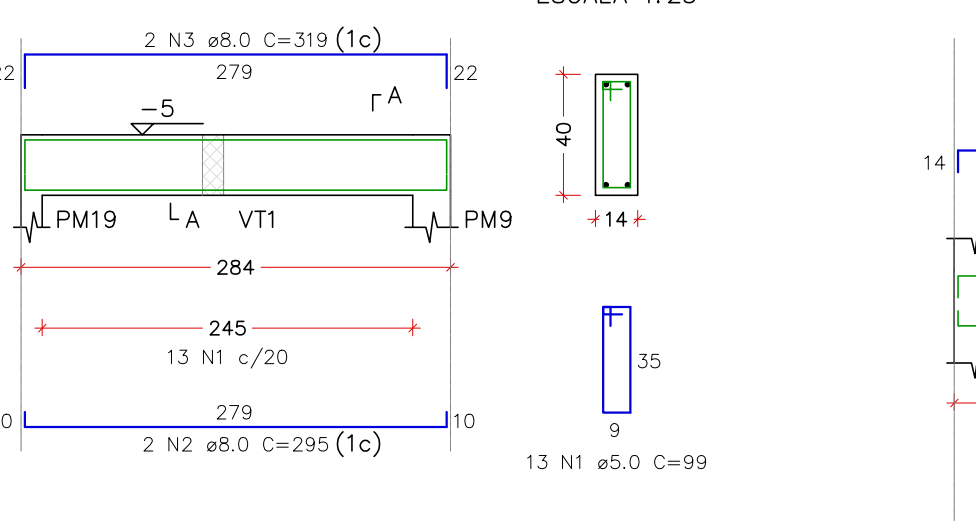
VT50
ESCALA 1:50



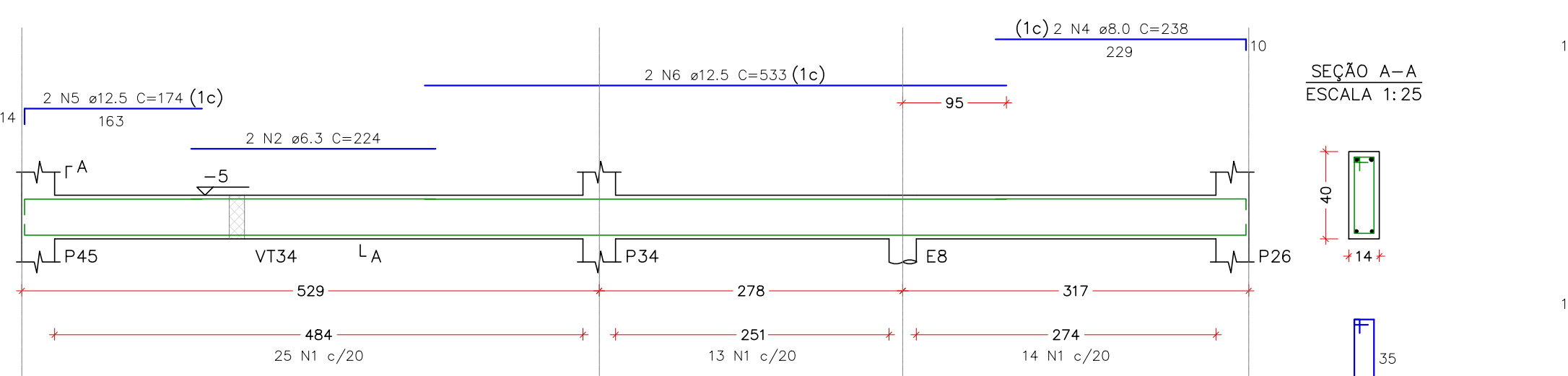
VT51
ESCALA 1:50



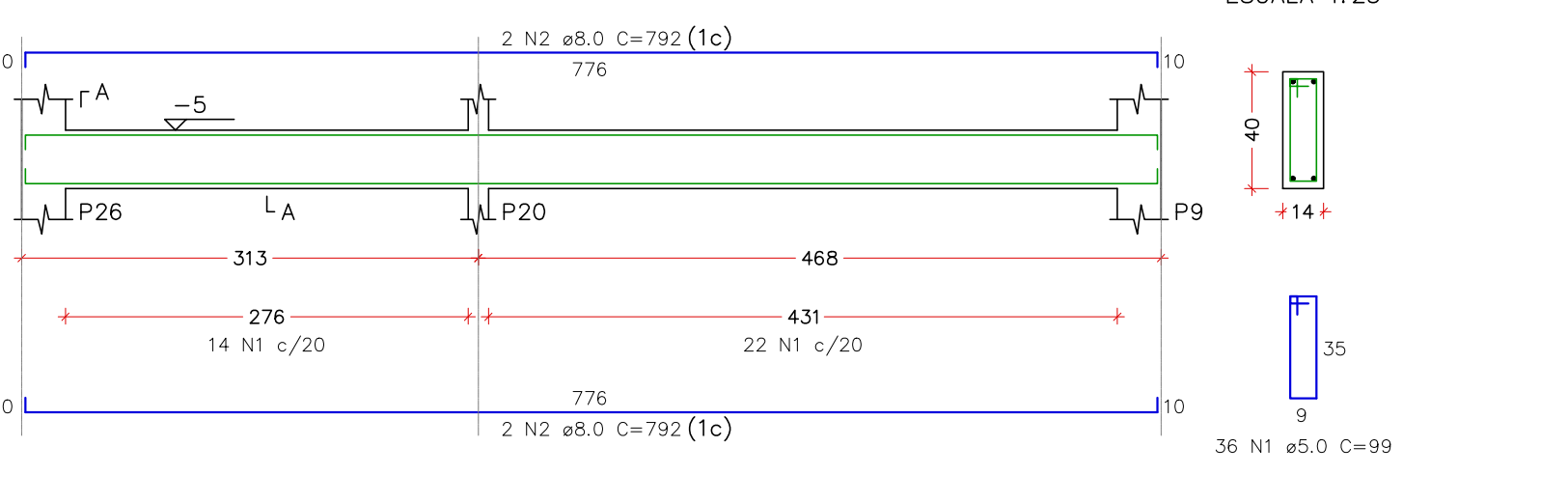
VT52
ESCALA 1:50



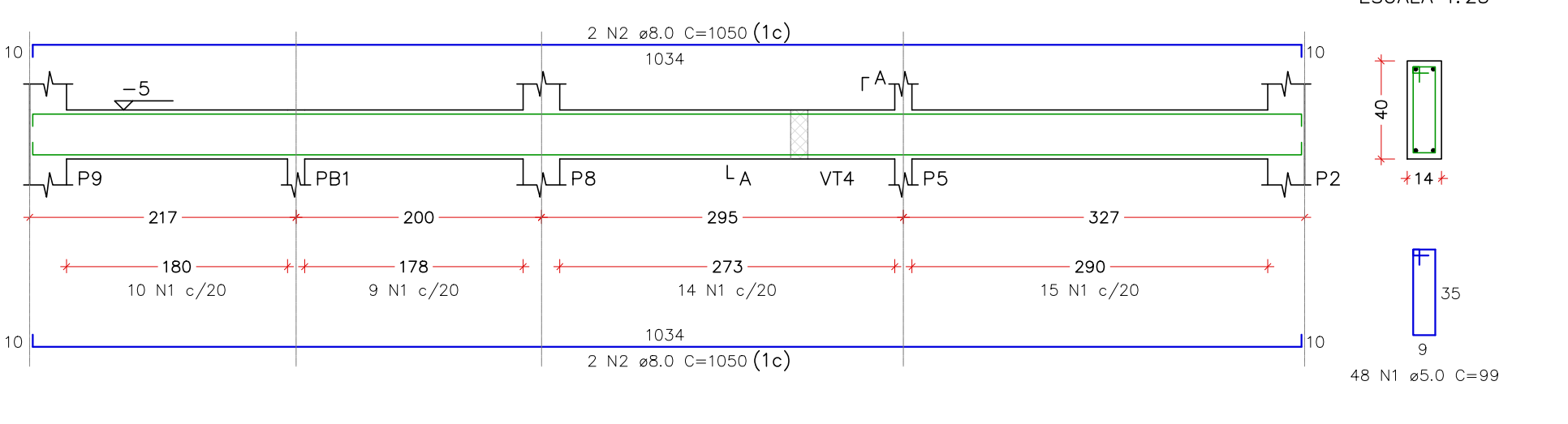
VT53
ESCALA 1:50



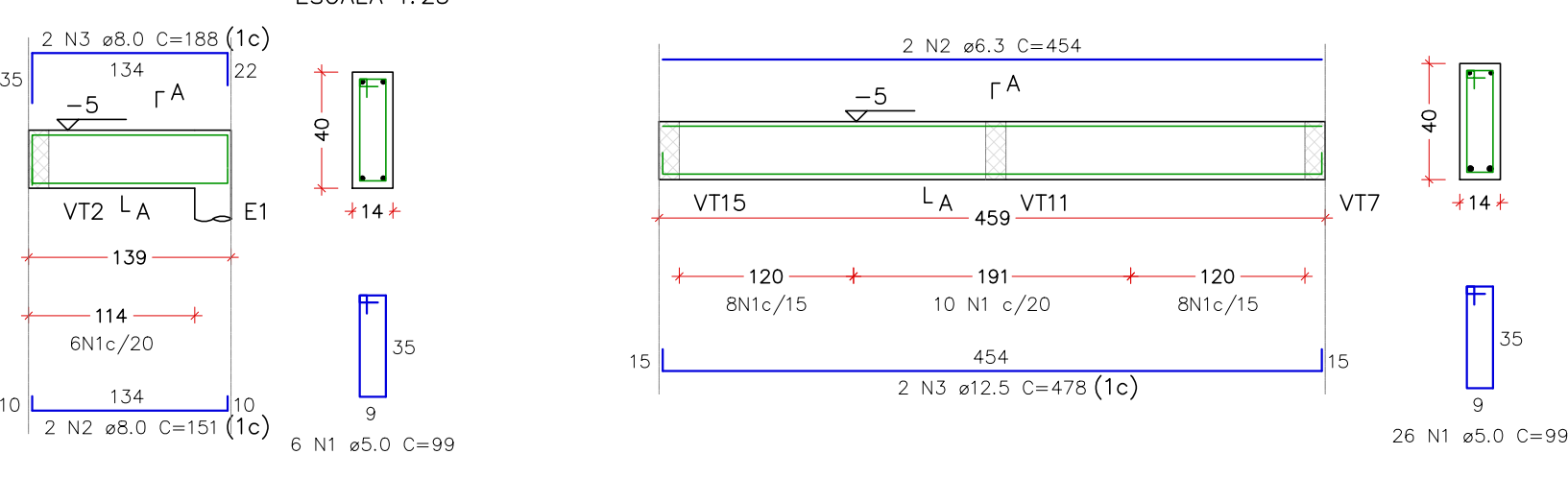
VT54
ESCALA 1:50



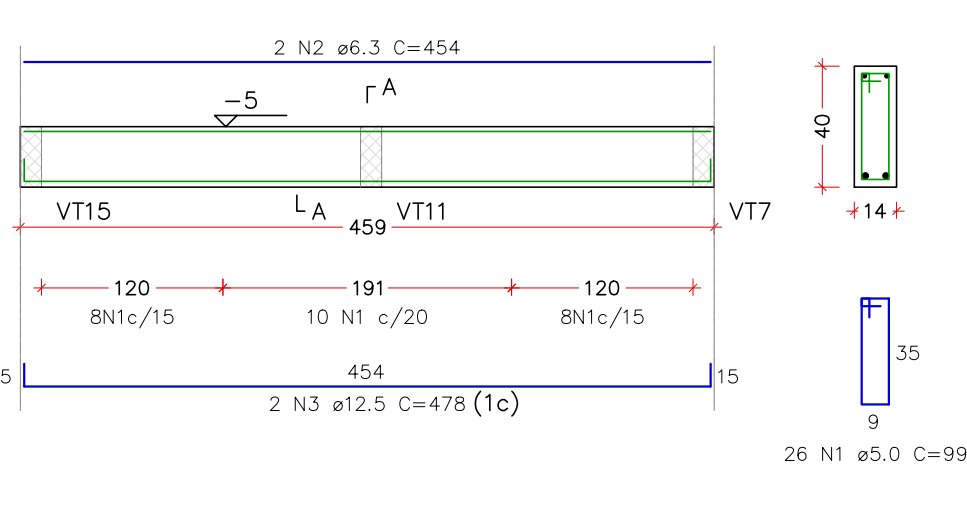
VT55
ESCALA 1:50



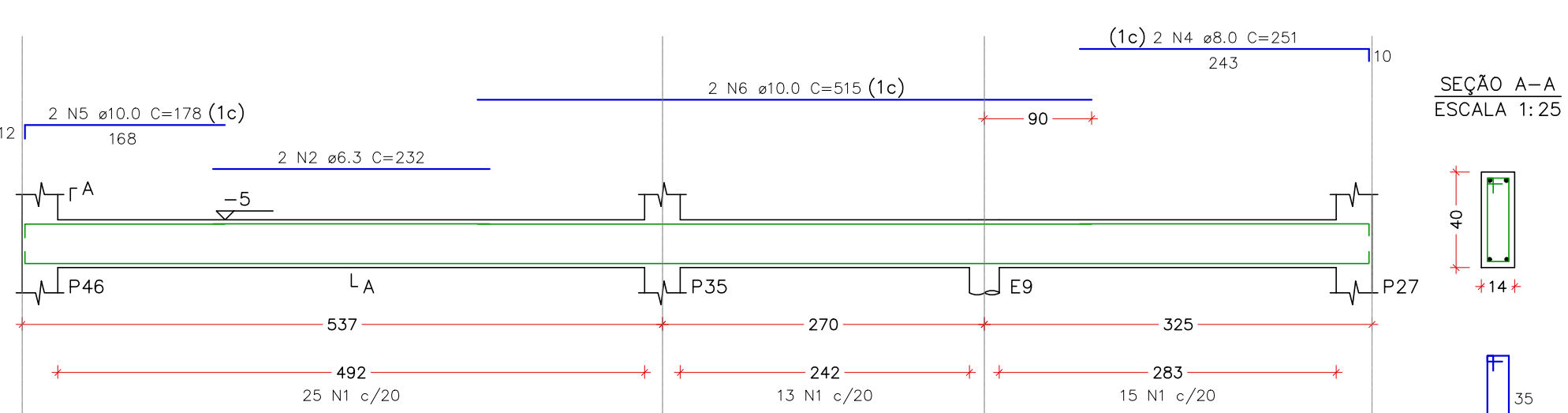
VT56
ESCALA 1:50



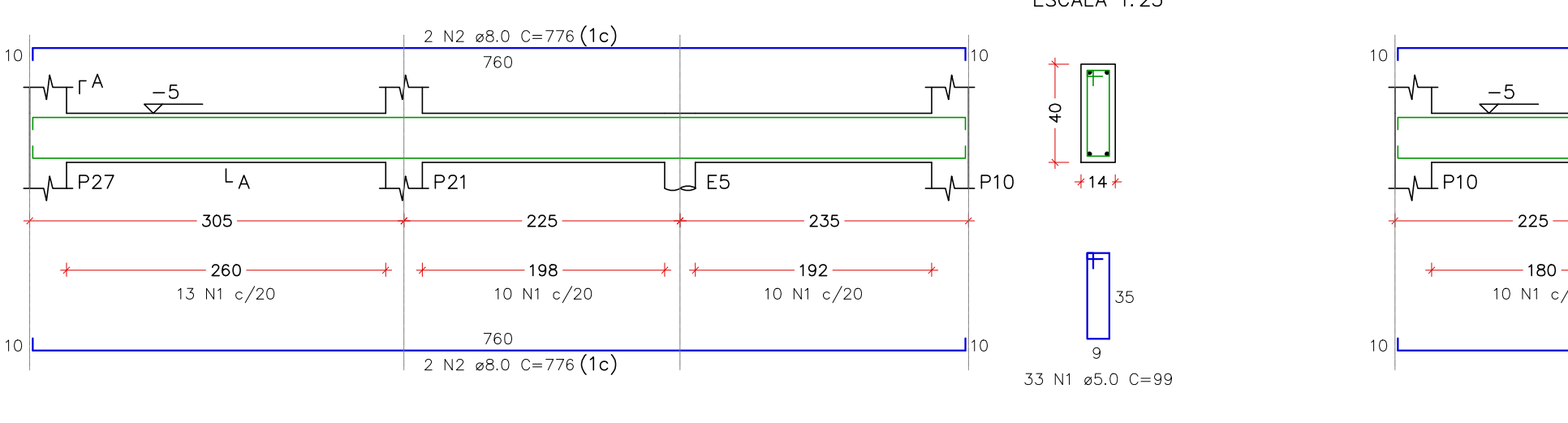
VT57
ESCALA 1:50



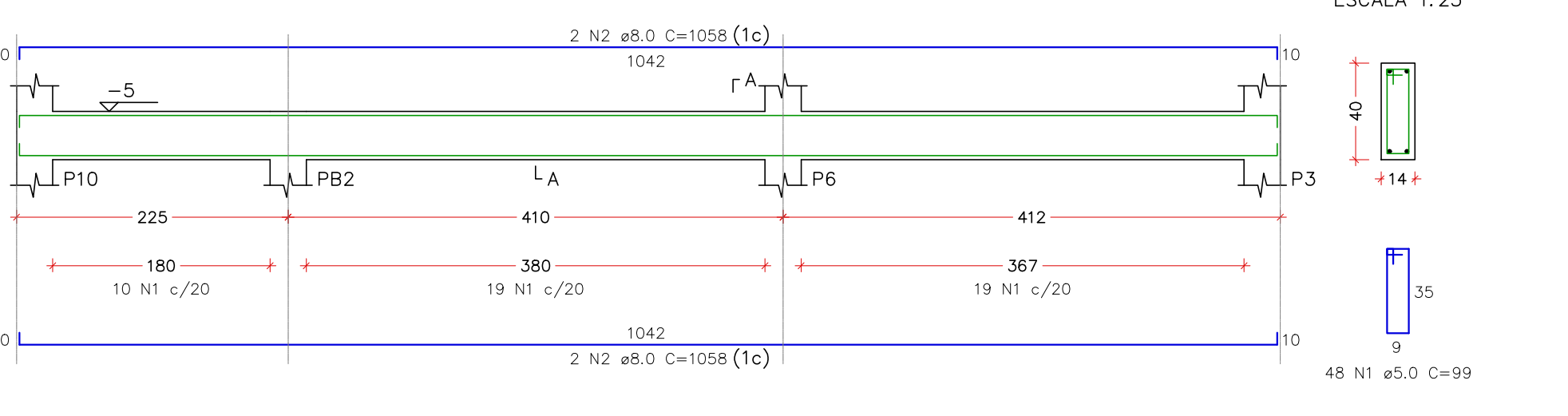
VT58
ESCALA 1:50



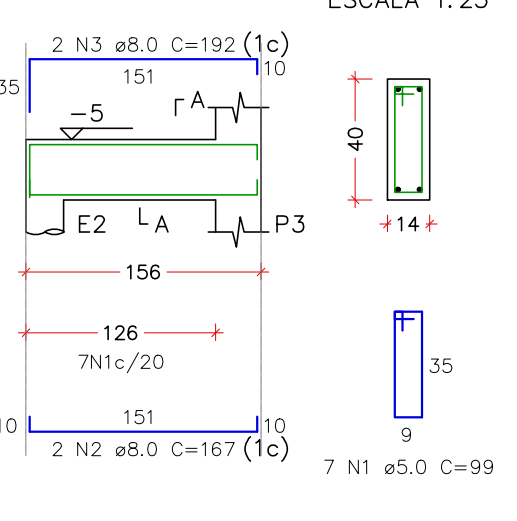
VT59
ESCALA 1:50



VT60
ESCALA 1:50



VT61
ESCALA 1:50



RELAÇÃO DO AÇO						
ELEMENTO	AÇO	N	DIAM (mm)	QUANT	C.UNIT (cm)	C.TOTAL (cm)
VT48	CA60	1	5.0	51	99	5049
	CA50	2	6.3	2	230	460
	CA50	3	8.0	2	1110	2220
	CA50	4	8.0	2	757	1514
	CA50	5	10.0	2	156	312
VT49	CA60	1	5.0	53	99	5247
	CA50	2	8.0	2	1123	2246
	CA50	3	8.0	2	1135	2270
	CA60	1	5.0	34	99	3366
	CA50	2	6.3	2	180	360
VT50	CA60	1	5.0	53	99	5247
	CA50	2	8.0	2	1123	2246
	CA50	3	8.0	2	1135	2270
	CA60	1	5.0	34	99	3366
	CA50	2	6.3	2	180	360
VT51	CA60	1	5.0	53	99	5247
	CA50	2	8.0	2	1123	2246
	CA50	3	8.0	2	1135	2270
	CA60	1	5.0	34	99	3366
	CA50	2	6.3	2	180	360
VT52	CA60	1	5.0	53	99	5247
	CA50	2	8.0	2	1123	2246
	CA50	3	8.0	2	1135	2270
	CA60	1	5.0	34	99	3366
	CA50	2	6.3	2	180	360
VT53	CA60	1	5.0	53	99	5247
	CA50	2	8.0	2	1123	2246
	CA50	3	8.0	2	1135	2270
	CA60	1	5.0	34	99	3366
	CA50	2	6.3	2	180	360
VT54	CA60	1	5.0	53	99	5247
	CA50	2	8.0	2	1123	2246
	CA50	3	8.0	2	1135	2270
	CA60	1	5.0	34	99	3366
	CA50	2	6.3	2	180	360
VT55	CA60	1	5.0	53	99	5247
	CA50	2	8.0	2	1123	2246
	CA50	3	8.0	2	1135	2270
	CA60	1	5.0	34	99	3366
	CA50	2	6.3	2	180	360
VT56	CA60	1	5.0	53	99	5247
	CA50	2	8.0	2	1123	2246
	CA50	3	8.0	2	1135	2270
	CA60	1	5.0	34	99	3366
	CA50	2	6.3	2	180	360
VT57	CA60	1	5.0	53	99	5247
	CA50	2	8.0	2	1123	2246
	CA50	3	8.0	2	1135	2270
	CA60	1	5.0	34	99	3366
	CA50	2	6.3	2	180	360
VT58	CA60	1	5.0	53	99	5247
	CA50	2	8.0	2	1123	2246
	CA50	3	8.0	2	1135	2270
	CA60	1	5.0	34	99	3366
	CA50	2	6.3	2	180	360
VT59	CA60	1	5.0	53	99	5247
	CA50	2	8.0	2	1123	2246
	CA50	3	8.0	2	1135	2270
	CA60	1	5.0	34	99	3366
	CA50	2	6.3	2	180	360
VT60	CA60	1	5.0	53	99	5247
	CA50	2	8.0	2	1123	2246
	CA50	3	8.0	2	1135	2270
	CA60	1	5.0	34	99	3366
	CA50	2	6.3	2	180	360
VT61	CA60	1	5.0	53	99	5247
	CA50	2	8.0	2	1123	2246
	CA50	3	8.0	2	1135	2270
	CA60	1	5.0	34	99	3366
	CA50	2	6.3	2	180	360

RESUMO DO AÇO			
AÇO	DIAM (mm)	C.TOTAL (m)	PESO + 10% (kg)
CA50	6.3	30.3	8.2
	8.0	330	143.3
	10.0	34.3	23.3
	12.5	23.7	25.1
CA60	5.0	469.3	79.6
PESO TOTAL (kg)			
CA50	199.8		
CA60	79.6		
VOLUME DE CONCRETO (C-30) = 5.11 m³			
ÁREA DE FORMA = 85.91 m²			

REV. 01	13/09/24	ALTERAÇÕES CONFORME SIOQUAÇÕES DA VIOLÊNCIA SANITÁRIA NO PROJ. ARQUITETÔNICO	DAC
REV. 00	01/11/23	EMIÇÃO INICIAL	DAC
REVISÃO	DATA	DESCRIÇÃO	RESP.
CLIENTE			
		Prefeitura Municipal de Pouso Alegre	
PROJETO			
COORDENAÇÃO DE PROJETOS	DENIS DE SOUZA SILVA CREA:MG-127.216/D		
RESPONSÁVEL TÉCNICO	ALOSIO C. FERREIRA CREA:MG-97.132/D		
RESPONSÁVEL TÉCNICO	RAFAEL B. CARREIRA CAU: 00A155411-5		
EMPREENDIMENTO			
CONSTRUÇÃO DA UBS DO BAIRRO MORUMBI			
ENDEREÇO	RUA JÚLIO CESAR HUNH, BAIRRO MORUMBI, POUSO ALEGRE – MINAS GERAIS		
ASSUNTO	PROJETO ESTRUTURAL EM CONCRETO ARMADO, VIGAS DO PAVIMENTO TERREO, VIGAS DA EDIFICAÇÃO		
DISCIPLINA	ESTRUTURAL		
FASE DO PROJETO	EXECUTIVO		
FOLHA Nº.	14/22		
DATA INICIAL	ESCALA	REVISÃO	ARQUIVO
01/11/2023	INDICADA	R01	DAC-PMPA-MRB-PE-EST-R01.DWG